

INFOSYS TECH
Software Innovates Your Business



IST WAREHOUSE-LINK

Warehouse Management System



HEAD OFFICE: Fawzy Moaaz St., Smouha, Alexandria, EGYPT / Tel.: (+2) 03 424 0177 Fax: (+2) 03 424 0188

RIYADH BRANCH: P.O. Box 20129 Riyadh 11455 Al-Ahsa Road, Building 7593 / Tel.: (+9661) 477 0477 Fax: (+9661) 478 3512

DUBAI BRANCH: P.O. Box 20378 Dubai, UAE, Al-Mamzar Centre Ittihad St. / Tel.: (+9714) 2669 636/639 Fax: (+9714) 2665 512

TRIPOLI BRANCH: 20 Ramadan St. Tripoli - LIBYA / Tel.: (+218) 21 721 2714 Fax: (+218) 21 721 2714



IST WAREHOUSE-LINK

Warehouse Management System

IST Warehouse-Link has been designed to serve companies that provide warehousing service to others.

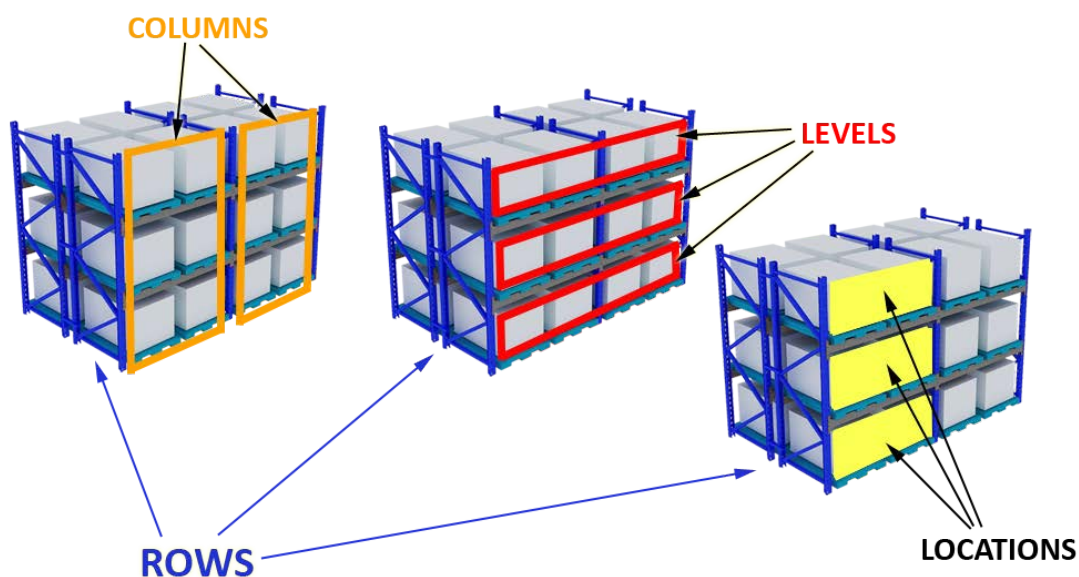
The system includes all warehousing operations and any belongings starting from the receipt of goods then storing them in the designated areas, then the process of picking-up the required goods and then calculating the value of warehousing based on the signed contracts with customers in addition to billing.

IST Warehouse management system covers all the following operations types:

- Warehouse planning.
- Receiving.
- Inventory Management.
- Pick-up of goods.
- Customers invoices.

Warehouse planning

The system enables the user to divide the warehouse into several areas and then divide each area into multiple rows & columns and specify the maximum load of each location associated with a statement that shows the location status (available / damaged / on-hold).



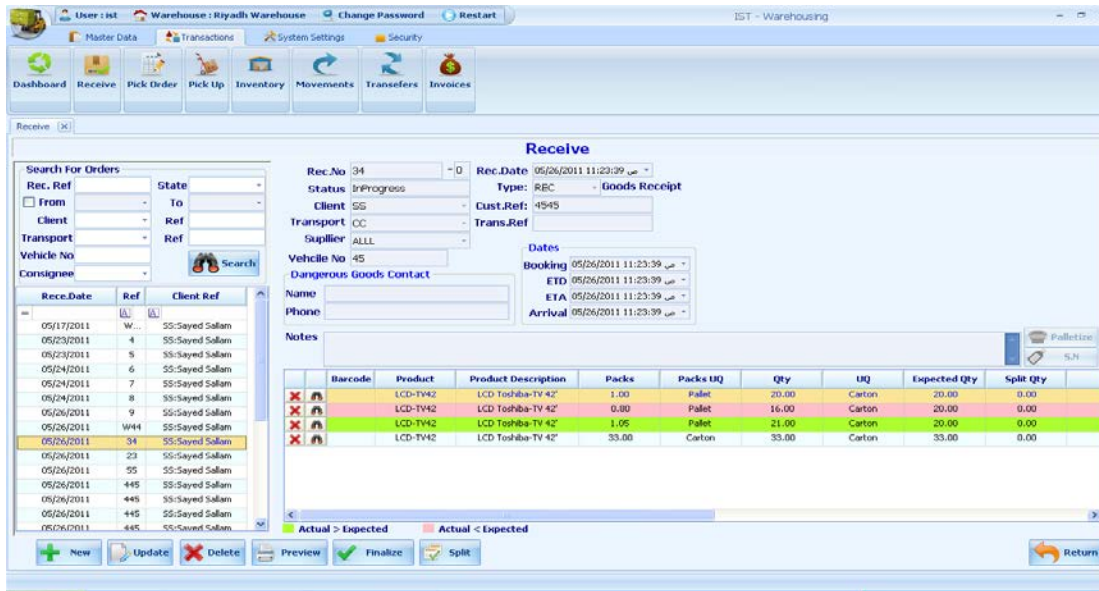


IST WAREHOUSE-LINK

Warehouse Management System

Receiving

The system enables the user to record the receipt of goods that was sent from customers with an indication of the weight and size of each item separately, and then the system displays the available places to store each item. The system does not allow finalizing receiving order unless all received items are put away.



Inventory management

The system allows the user to view the inventory all over the warehouse or a specific area or the goods of a particular client or certain kind of goods.

The system also allows the user to move goods from one location to another within the same warehouse or from a warehouse to another warehouse.

IST Warehouse-Link provides the possibility of changing the condition of the received goods from available to damaged and indicating the quantity, the cause of damage and the user who changed this condition.





IST WAREHOUSE-LINK

Warehouse Management System

Pick-up of goods

The system enables the user to record pick-up orders sent from clients and indicating the required quantity of each item and the specified date of picking up these goods, then; the system displays the available amounts of this kind (for a specific client) and indicates their locations in the warehouse to issue a pick-up order to the persons in charge to start working, after completion the pick-up process; the order is closed.

Pick Up

Search For Picks

Pick No: P0000014
Status: Finalized

Orders In This Pick

Order No	Order Date
07777777	17/05/2011
P000001	23/05/2011

Order Details

Product	Description	Packs	Pack UQ	Quantity	UQ	Picked	Short	Remarks
LCD-TV	LCD Toshiba-TV 29"	3.00	PLT	30.00	PKG	14.00	16.00	

Inventory

Product	Location	Receive No.	Quantity	UQ	Pick Date	Receive Date	Special Instructions
LCD-TV	A2210	445	14.0000	UNT	01/06/2011	29/05/2011	

Customers invoice:

The system calculates the bills of customers based on the agreed tariff in the signed contracts with them and calculates the value of warehousing per cubic meter and the allowed amount per month or the allocated space for the client, also it calculates the value of goods handling on receiving and pickup.

The system also enables the user to transfer these invoices automatically to the General Ledger system (in case the client asked for this).

Invoices

Search For Orders

Ref: 222
Inv.No: 2222
Client: SS
Rec.Date: 06/14/2011

Detail

Rec.Ref	Pick.Ref	Exp/Invoice Items	Space_Pallets	NoOfDays	Rate	Amount	Currency	ExchangeRate	Remarks
4	0	Storage	10.00	10	50.00	500.00	SR	1.000	
2	2	Handling	1.00	1	200.00	200.00	SR	1.000	